

Drive+ Series ARM Firmware Upgrade Instruction via Serial Port

1. Set the dial switch at the bottom of the camera to "1--OFF,2--OFF".
2. The camera is powered on and connected to the computer via a USB to RS232 cable.
3. Open the ARM upgrade tool "FlyMcu" on your computer.

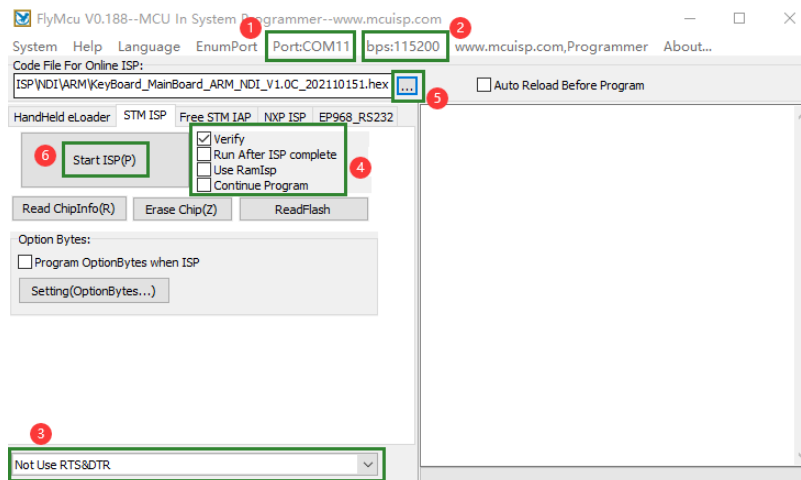


2014-09-02 12:39

应用程序

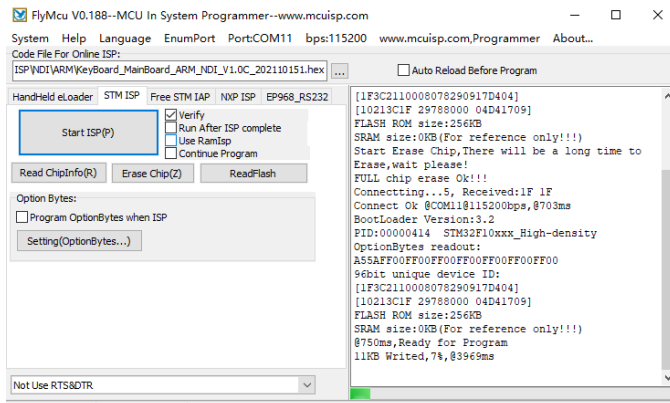
2,591 KB

4. The "FlyMcu" interface is as follows:

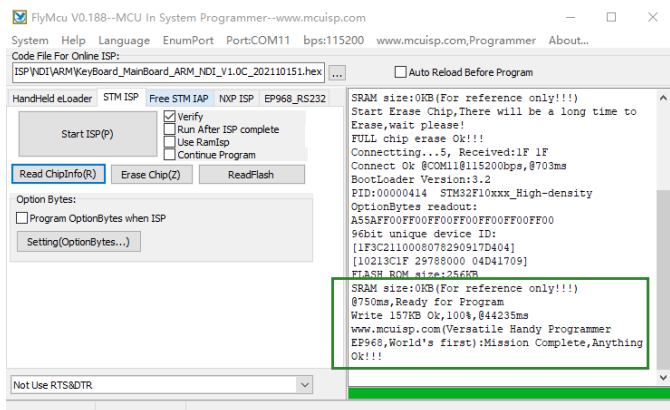


- ① Select the port number for RS232 cable access here.
- ② Select the baud rate 115200.
- ③ Select "Not Use RTS&DTR" here.
- ④ Only check "Verify" here.
- ⑤ Select the "XXX.hex" file to be upgraded here.
- ⑥ After setting the above 5 places, click "Start ISP(P)" to upgrade.

5. The upgrade process interface is as follows:



6. The following is displayed after a successful upgrade:



7. Unplug the power, set the dial switch at the bottom of the camera to "1--ON,2--ON", restart the keyboard can be used normally.